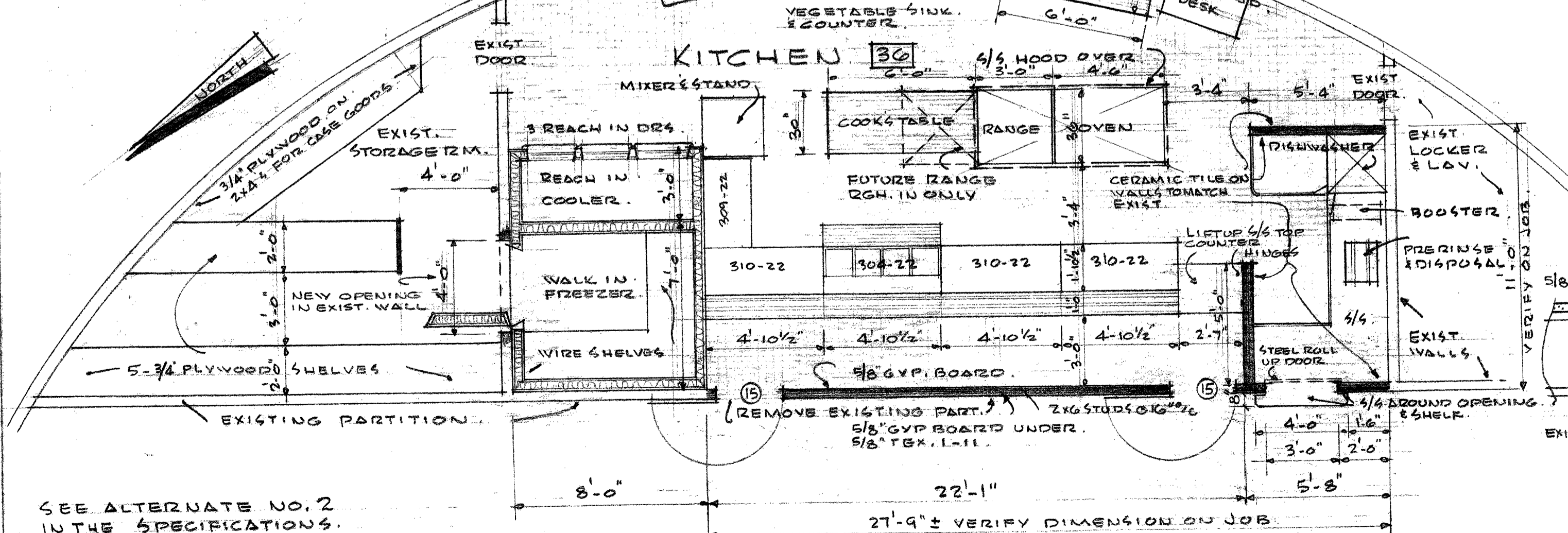


**LOFT FLOOR PLAN**  
SCALE 1/8" = 1'-0"

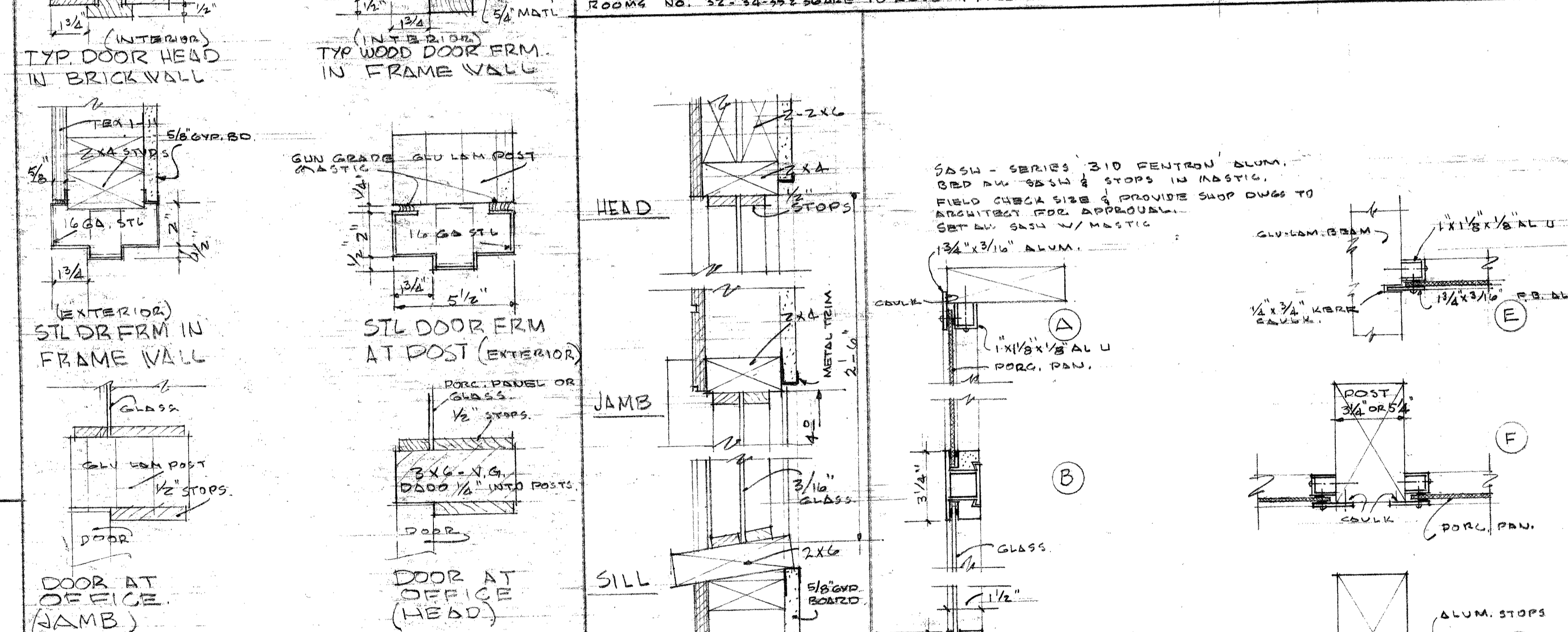
NOTES:  
CONTRACTOR TO VERIFY ALL MECH. & ELEC. IN EXIST. ROOM AND MOVE TO LOCATION AS SHOWN FOR EQUIPMENT ON PLAN. CHIP OUT EXIST. CONC. FLOOR WHERE NEEDED, AND INSTALL CERAMIC TILE FLOOR & BASE THRU-OUT ROOM.

NOTE:  
SEE SPECIFICATIONS FOR SIZE OF EQUIPMENT.

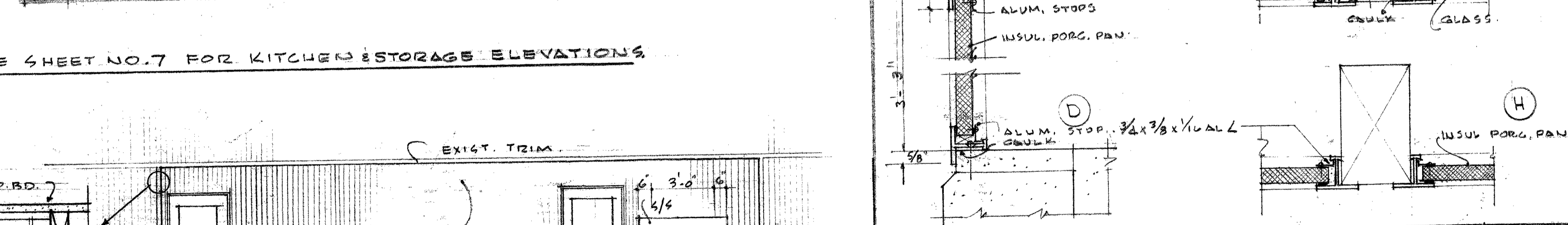


**4 NEW KITCHEN IN EXISTING BUILDING** 1/4" = 1'-0"

DOOR SCHEDULE				ROOM FINISH SCHEDULE									
DOOR NO.	SIZE	TYPE	HARDWARE TYPE	REMARKS	ROOM NO.	ROOM NAME	FLOOR	BASE	WALL	FINISH	CEILING	ACCOUSTICAL	REMARKS
1	28' x 10' x 1 3/4"	H.M.	1	W/ SHATTERPROOF GL.	1	LOBBY	ASPH. TILE	4" BLACK RUBBER	5/8" BRICK	SEE SPECS	ACCOUSTICAL PLASTER	SEE SPECS	5/8" GYP. BOARD ABOVE 8'-0"
2	•	•	2	REUSE EXIST. DRZ.	2	HALL	•	•	5/8" BRICK	•	•	•	•
3	38' x 68' x 1 3/4"	WOOD 4.C.	3	W/	3	RECEPT.	•	•	5/8" BRICK	•	•	•	•
4	•	•	4	W/ 10' x 10' 1/4" WIRE GLOPING SOLID.	4	OFFICE	•	•	•	•	•	•	•
5	•	•	5	•	5	PRINC.	•	•	•	•	•	•	•
6	•	•	6	•	6	TOILET	•	•	•	•	•	•	•
7	•	•	7	W/ 10' x 10' 1/4" WIRE GLOPING SOLID.	7	HEALTH	•	•	•	•	•	•	•
8	•	•	8	•	8	CLASSROOM #10	•	•	•	•	•	•	•
9	•	•	4 & 9	•	9	CLASSROOM #11	•	•	•	•	•	•	•
10	28' x 68' x 1 3/4"	•	10 & 11	•	10	CLASSROOM #12	•	•	•	•	•	•	•
11	•	•	12	•	11	CLASSROOM #13	•	•	•	•	•	•	•
12	28' x 68' x 1 3/4"	•	13	•	12	CLASSROOM #14	•	•	•	•	•	•	•
13	32' x 68' x 1 3/4"	•	14	•	13	CLASSROOM #15	•	•	•	•	•	•	•
14	•	H.M.	15	•	14	CLASSROOM #16	•	•	•	•	•	•	•
15	28' x 68' x 1 3/4"	WOOD 4.C.	13	W/ SHATTERPROOF GL.	15	CLASSROOM #17	•	•	•	•	•	•	•
16	•	•	•	NOTE: WOOD DOORS TO HAVE PAINT GRADE BIRCH FACE	16	CLASSROOM #18	•	•	•	•	•	•	5/8" GYP. BD. BEHIND TEXT-11
17	•	•	•	•	17	HALL	•	•	TEX. 1-11	•	•	•	•
18	•	•	•	•	18	CORRIDOR	•	•	SCR BRICK	•	•	•	•
19	•	•	•	•	19	LIBRARY	•	•	SCR BRICK	•	•	•	•
20	•	•	•	•	20	LIBRARIAN	•	•	5/8" GYP. BD.	•	•	•	•
21	•	•	•	•	21	SPEC. ED.	•	•	•	•	•	•	5/8" BRICK UP 8'-0" ON CORR. WALLS - TEX. 1-11 ABOVE TO GLS.
22	•	•	•	•	22	MULTI-PURPOSE	•	•	TEX. 1-11	•	•	•	•
23	•	•	•	•	23	STORAGE	•	•	1/2" PLYWD. A-D	•	1/2" PLYWD. A-D	•	•
24	•	•	•	•	24	STORAGE	•	•	•	•	•	•	•
25	•	•	•	•	25	TEACHERS	•	•	SCR BRICK	•	ACCOUSTICAL PLASTER	•	•
26	•	•	•	•	26	MEAN	•	•	1/2" GYP. BD.	•	•	•	•
27	•	•	•	•	27	WOMEN	•	•	SCR BRICK	•	•	•	•
28	•	•	•	•	28	BOYS	CERAMIC TILE	CERAMIC TILE	•	•	•	•	1/2" W.P. PLYWOOD BEHIND CERAMIC TILE MAINCOT UP 4'-0" ON FRAME WALLS - SEE ELEV.
29	•	•	•	•	29	GIRLS	•	•	SCR BRICK	•	•	•	•
30	•	•	•	•	30	JANITOR.	ASPH. TILE	4" BLACK RUBBER	SCR BRICK	•	•	•	9" HIGH BLACK RUBBER ON SIDES OF STAIRS
31	•	•	•	•	31	STAIRWAY	•	•	1/2" GYP. BD.	•	•	•	•
32	•	•	•	•	32	LOFT	1/2" PLYWOOD	NONE	NONE	•	•	•	9" HIGH BLACK RUBBER ON SIDES OF STAIRS
33	•	•	•	•	33	STAIRWAY	ASPH. TILE	4" BLACK RUBBER	1/2" GYP. BD.	•	SEE SPECS	•	•
34	•	•	•	•	34	LOFT	1/2" PLYWOOD	NONE	NONE	•	•	•	•
35	•	•	•	•	35	MECHANICAL	CONC.	•	SCR BRICK	•	SEE SPECS	5/8" GYP. BD.	SEE SPECS
36	•	•	•	•	36	KITCHEN	CERAMIC TILE	CERAMIC TILE	1/2" GYP. BD.	PAINT, EXIST.	PATCH EXIST.	PAINT	CERAMIC TILE ON WALLS AS NOTED TO MATCH EXISTING.



**3 TYPICAL DOOR JAMB DET. 3'-1'-0"** 2. STOPPED-IN 3'-1'-0" GLASS.



**1. SASH DETAILS** 3'-1'-0"

SEE SHEET NO. 7 FOR KITCHEN & STORAGE ELEVATIONS

REGISTERED ARCHITECT  
James C. Gardiner  
Portland, Oregon  
STATE OF OREGON

JAMES C. GARDINER AIA ARCHITECT  
3158 S.W. 87TH AVENUE - PORTLAND, OREGON - CY 2-3727

ADDITION TO  
VOSE ELEMENTARY SCHOOL  
SCHOOL DIST. NO. 48 WASHINGTON COUNTY OREGON

DATE: 1-18-62  
FILE NO. 61-691

TITLE OF SHEET  
LOFT PLAN & SCHEDULES

SHEET NUMBER  
4 of 8